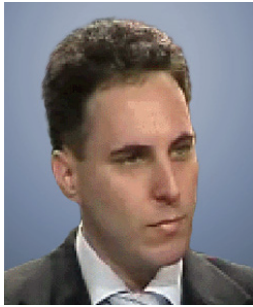


A message from the Deputy Secretary-General and Webmaster



Adv. Oren Asman,
WAML Deputy Secretary-General

It is not quite a year since I accepted the honor of becoming the Deputy Secretary-General of the World Association for Medical Law (WAML) and its Webmaster and I am delighted to offer an overview of some of our activities during that period: A new domain (www.thewaml.com) was acquired and the website was rebuilt to satisfy the needs of our members and to enhance the membership experience and benefits. All this work was done with great collaboration and support from Prof. Roy Beran, our Secretary General; Prof. Thomas Noguchi, our Treasurer; and Mrs. Cathie Bagwell, Assistant to Treasurer.

Here is a short summary of some of the functions our website offers:

Joining WAML

New WAML applicants (people who were not members in the past) can apply for membership online (<http://www.thewaml.com/97918/Apply-for-Membership>) . Their request is then handled by the

credentialing committee. An applicant who paid the yearly fee (which can also be done online: <http://www.wamlmembership.org/>) usually can receive the credentialing committee's approval within a few days. New approved and paid members receive their website user name and password by email soon after formally joining.

WAML website Members Log in

To access various restricted parts of our website, members are required to Log-in.

In order to do so, please choose: "Members log in" on the left website menu.

Now, on the left side of the main screen, under "Entry for Registered Users" you need to fill in your user name and password and also mark that you agree to the terms and conditions. Having done so, you need to click on "Login".

You can also use the website without logging in, in which case, when trying to access a members-only zone this Login page will automatically appear.

Members additional Menu

After logging in, a horizontal line appears above the main website page content (under the top menu), This is the Members additional menu.

Updating your Profile:

All members have their own website profile which can be viewed by other members (for instance, when reading a message that a particular member posted on the forum

or when sending or receiving a message to and from that member). Updating your profile provides other members with an opportunity to know you and your professional background better. Here you can change your password, add communication information, personal and professional data and also your picture (not larger than 200Kb). You also can choose your privacy preferences (for instance, whether other users will see your information, and to what extent). You may add a personal question and answer, to be used in case you forget your password.

Message Box:

Here, you can check your personal WAML message box (it can contain up to 200 messages). This can be used to enhance members deliberation and interaction.

Other Members-only website areas

1. Newsletters

Our web newsletter which was launched on 2009 is published online for members only. Each 4 months another issue is published.

2. Publications → Articles

The list of articles contributed to our website by WAML members is open to all, the full text articles are restricted to members only. You are encouraged to send us a web article for consideration.

3. Forum

The forum is open to all. Only WAML members can take active part in it. You are encouraged to do so, either by reading current posts and responding or by initiating new discussion topics.

4. World Congress → Abstracts from the 17th WCML

The abstract list is open to all. The abstracts' texts are restricted to members only. These are now in the process of being uploaded to the site.

5. Legal Medicine and Medical Law around the World

The Secretary General has started to collect and post online local overviews from WAML members in different countries. These are restricted to member-only. You are encouraged to contact us and contribute an overview about your own country.

6. WAML Membership → Directory

The list of paid WAML members also includes their website username (to enable sending them a message) and a link to their website personal page, where you can get more information about the member and contact him/her through the site's email function or through his/her regular email).

Useful Website functions

Site Search:

A "Site Search" Box appears on the left menu. This can be a great

resource for finding a certain page or information.

For instance, typing "informed consent" gives now 16 different results, including: Regional Medical Law Overviews, Several full text laws, relevant abstracts from the World Congress of Medical Law, relevant web-articles, relevant Medicine and Law abstracts and so on. Non-members will not be able to view results that are restricted to members only. As the website keeps updating and enhancing with more information, the number of results per search will increase

Future website information

As our website continues to grow and develop, the information on the existing members-only parts of our website will enhance and other members-only pages and sections will be available online. These will also include:

1. Index of the Journal of Medicine and Law
2. Abstracts from the Journal of Medicine and Law
3. Full text articles from the Journal of Medicine and Law (for members only)

You are encouraged to visit our website frequently, exchange thoughts and ideas with other colleagues, share your experience and help us extend the over-all contribution of WAML to Medical Law and Ethics around the globe.

Yours,

Oren Asman

Deputy Secretary General and
Webmaster.



Haifa University on Mount Carmel Adv. Oren Asman is co-Chair of the Department for Mental Health, Law and Ethics (<http://ichle.com/87091/forensicpsychiatry>) at the International Center for Health, Law and Ethics (directed by Prof. Amnon Carmi, WAML President) at the Law Faculty of Haifa University.

The 18th World Congress on Medical Law



Zagreb Croatia
www.2010wcml.com

Important Dates and Deadlines

Abstract submission
before February 28, 2010

Notification of abstract
acceptance
by March 15, 2010

Full papers
before April 20 2010